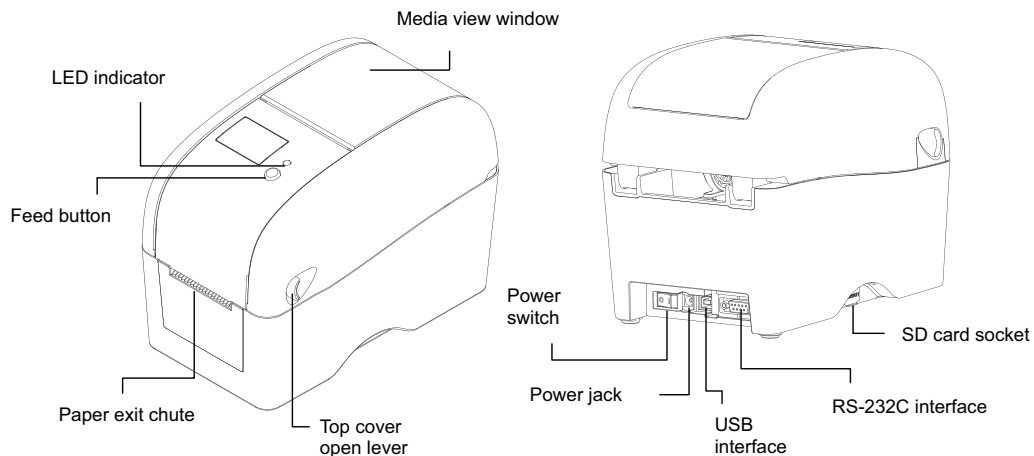
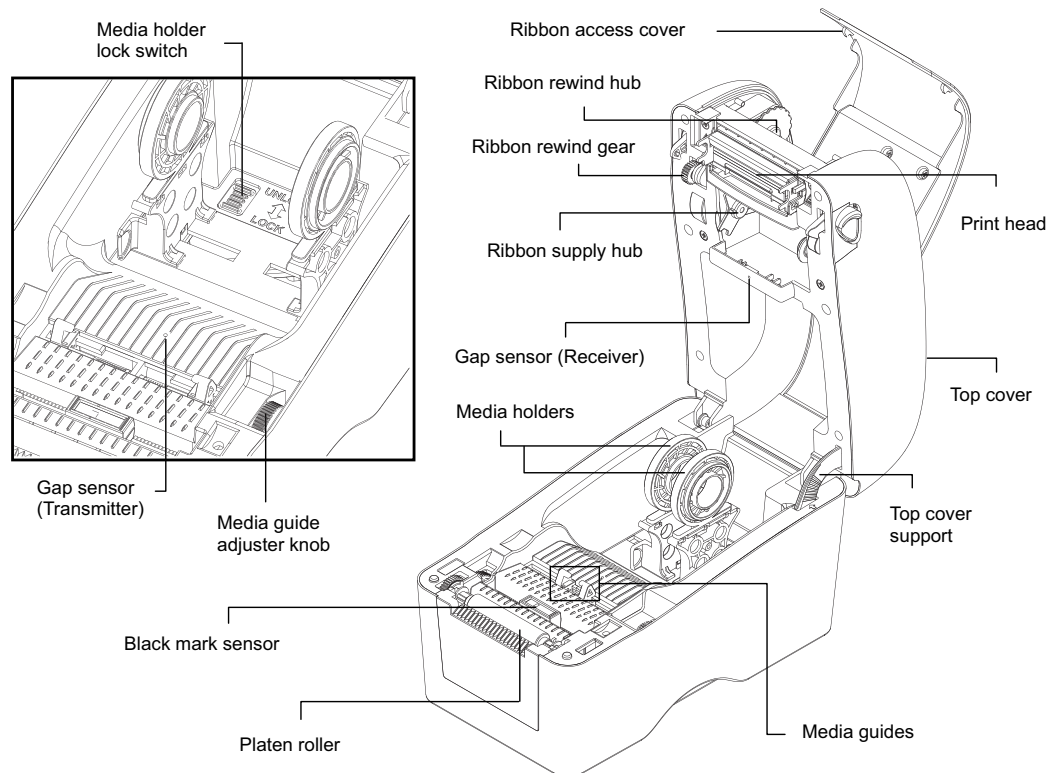


# Quick Installation Guide

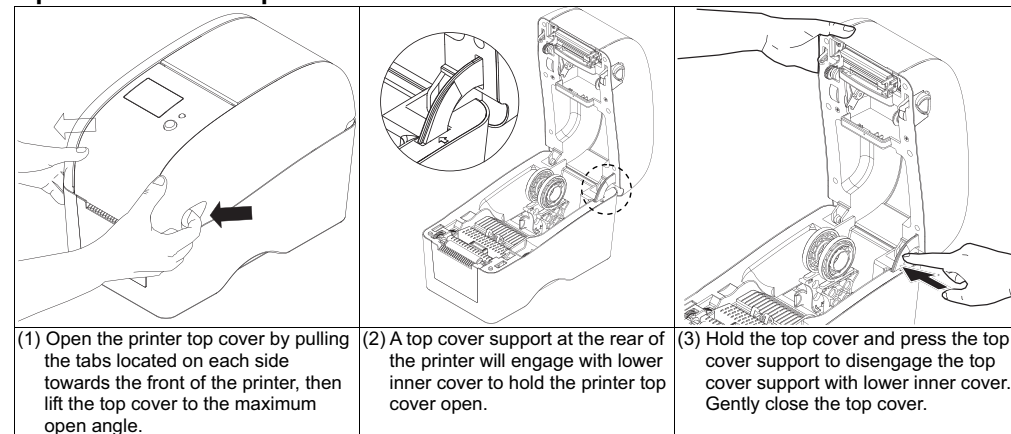
## Printer Overview



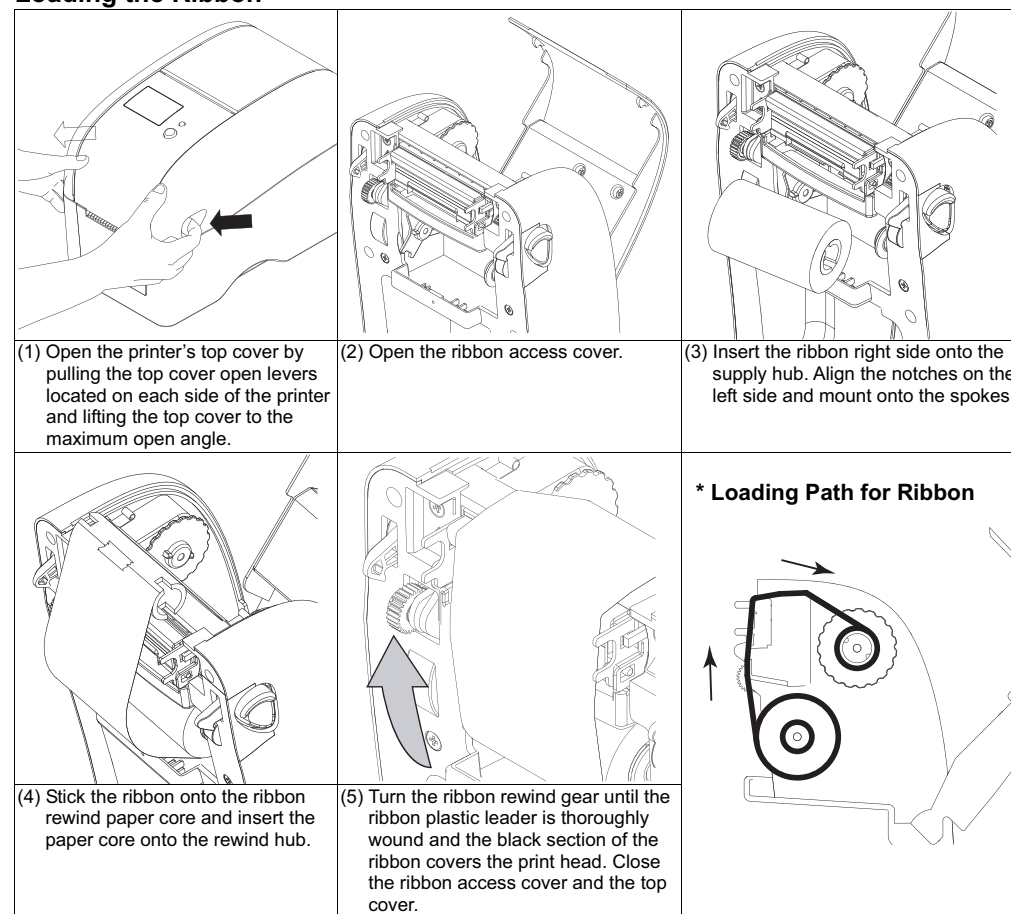
**Note:**  
The interface picture in the quick start guide is for reference only. Please refer to the product specification for the interfaces availability.



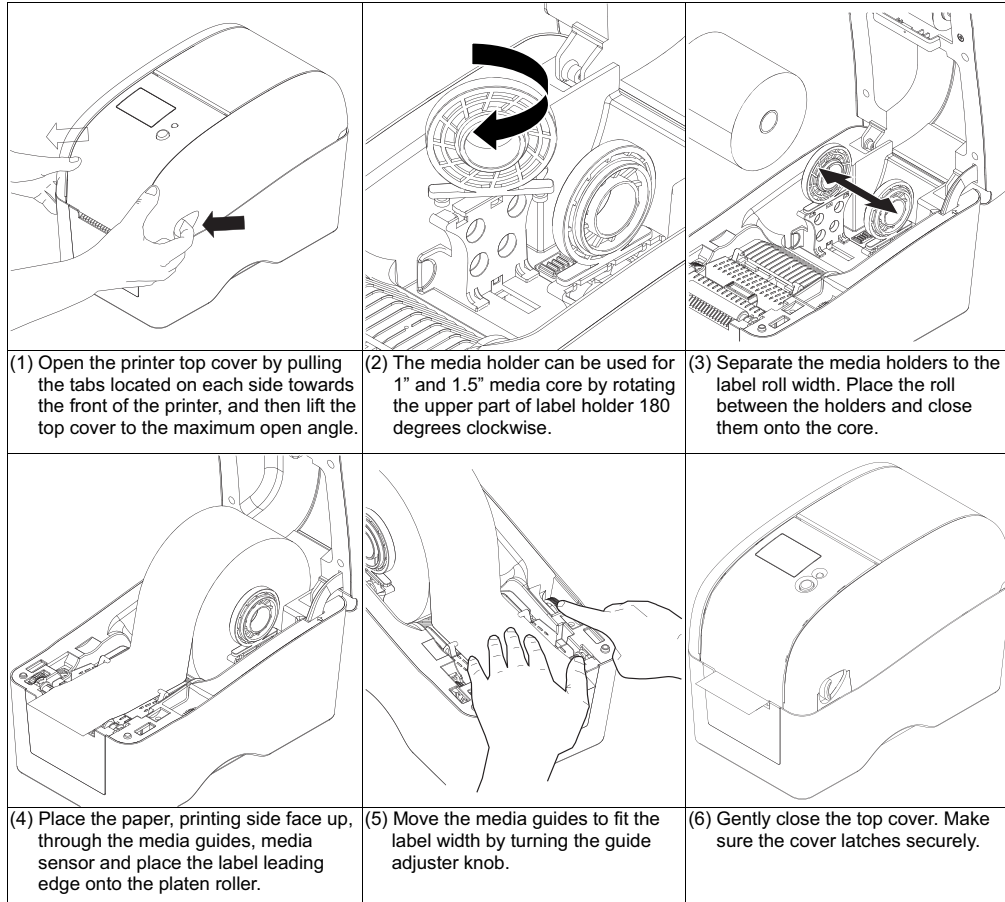
## Open / Close the Top Cover



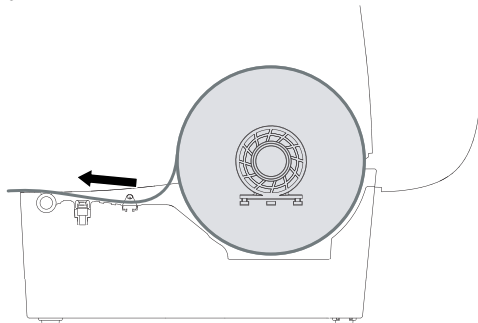
## Loading the Ribbon



## Loading the Media



### \* Loading Path for Media



(7) Use "Diagnostic Tool" to set the media sensor type and calibrate the selected sensor. (Start the "Diagnostic tool" → Select the "Printer Configuration" tab → Click the "Calibrate Sensor" button )

#### Note:

Please calibrate the gap/black mark sensor when changing the media.

## Button Functions

### (1) Feed labels

When the printer is ready, press the button to feed one label to the beginning of next label.


### (2) Pause the printing job

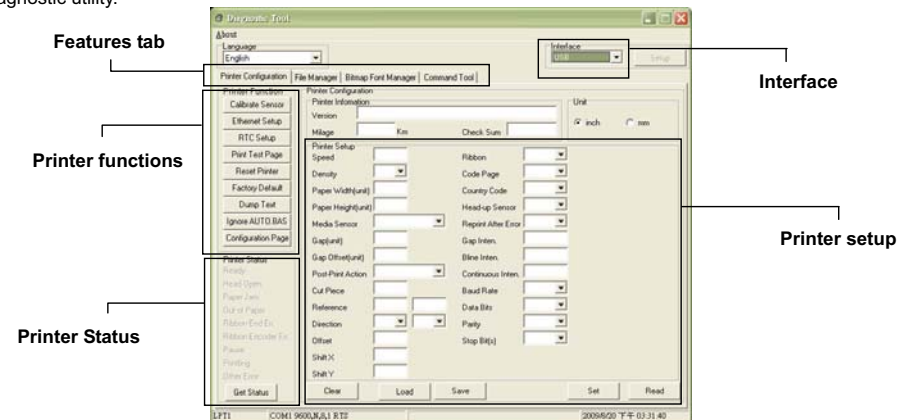
When the printer is printing, press the button to pause a print job. When the printer is paused the LED will blink green. Press the button again to continue the printing job.

## Diagnostic Tool

The Diagnostic Utility is a toolbox that allows users to explore the printer's settings and status; change printer settings; download graphics, fonts, and firmware; create printer bitmap fonts; and to send additional commands to the printer. Using this convenient tool, you can explore the printer status and settings and troubleshoot the printer.

### Start the Diagnostic Tool:

- (1) Double click on the Diagnostic tool icon  to start the software.
- (2) There are four features (Printer Configuration, File Manager, Bitmap Font Manager, Command Tool) included in the Diagnostic utility.



(3) The detail functions in the Printer Function Group are listed as below.

Printer Function	Function	Description
Calibrate Sensor	Calibrate Sensor	Calibrate the sensor specified in the Printer Setup group media sensor field
Ethernet Setup	Ethernet Setup	Setup the IP address, subnet mask, gateway for the on board Ethernet
RTC Setup	RTC Time	Synchronize printer Real Time Clock with PC
Print Test Page	Print Test Page	Print a test page
Reset Printer	Reset Printer	Reboot printer
Factory Default	Factory Default	Initialize the printer and restore the settings to factory default.
Dump Text	Dump Text	To activate the printer dump mode.
Ignore AUTO.BAS	Ignore AUTO.BAS	Ignore the downloaded AUTO.BAS program
Configuration Page	Configuration Page	Print printer configuration

#### Note:

\* For more information and features about this printer, please refer to the User's Manual inside the CD disk.

\* Please switch OFF printer power switch prior to plug in the power cord to printer power jack.

\* Specifications, accessories, parts and programs are subject to change without notice.